

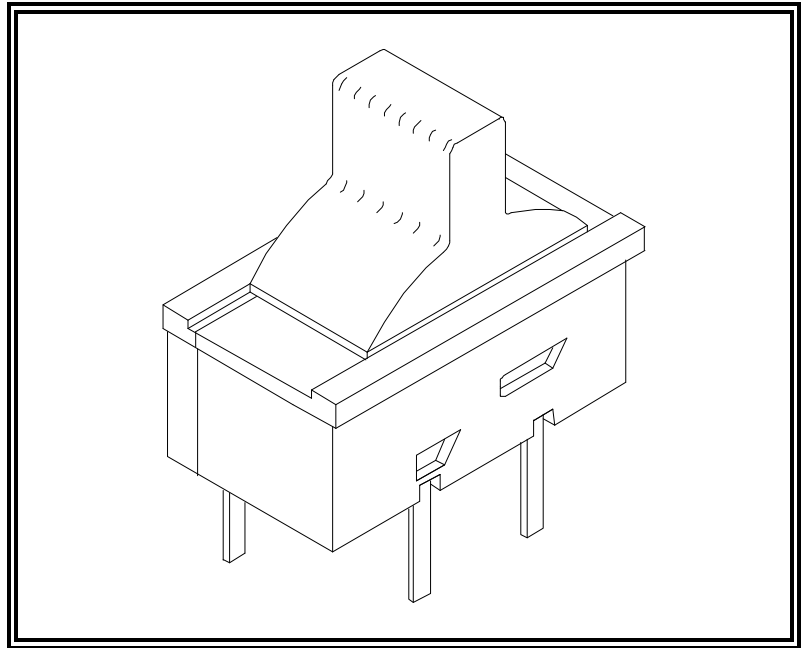


Resistance Technology, Inc.
 1260 Red Fox Road
 Saint Paul, MN 55112
 FAX (651) 636-9503
 1 (800) 966-3280
 Phone: (651) 604-9600
 Internet: www.RTI-Corp.com

In Europe:
 Resistance Technology GmbH
 Kesselschmiedstrasse 10
 D-85354 Freising, Germany
 Telefon: 049-8161-4804-0
 Telefax: 049-8161-4804-18
 RTGMBH@Compuserve.com

PRODUCT DATA SHEET

SLIDE SWITCH MODEL 21-3 (TYPE 2 ONLY)



NOTES: 1. All dimensions are in standard inches; metric in []
 2. Unless specified dimensions are ± 0.003 [0.08], angles $\pm 5^\circ$

PRODUCT SPECIFICATIONS

MECHANICAL DATA

Operational Force End to Middle 80 grams (typical)
 Middle to End 150 grams (typical)
 Tactile Sensation assures stable position.

Soldering
 Temperature 350°C max
 Dwell Time 2 sec max

MATERIALS DATA

Terminals Plated Beryllium Copper, Gold over Silver
 Housing Thermoplastic
 Driver Thermoplastic

ELECTRICAL DATA

Contact Resistance 250 milliohms max; 25 milliohms typical
 Contact Bounce and Noise.... Less than 5 milliseconds
 Voltage Rating 6.0 Volts DC max
 Current Rating 500 Milliampere max

ENVIRONMENTAL DATA

All specified electrical and mechanical parameters remain with spec after:

Thermal Shock per IEC Publication 68-2-14 Test Na: "Rapid Change of Temperature with Prescribed Time of Transition". -25°C to + 55°C

48 Hours Exposure to QE008 Perspiration at 40°C

IEC Publication 68-2-3 Test Ca: "Damp Heat Steady State."

IEC Publication 68-2-30 Test Db: "Damp Heat Cyclic"

Operational Life 25,000 cycles at max electrical rating

RTI reserves the right to make changes at any time to improve reliability, function, or design in order to provide the best possible product.



MODEL 21-3 (TYPE 2) PRODUCT DATA SHEET

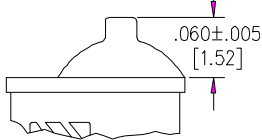
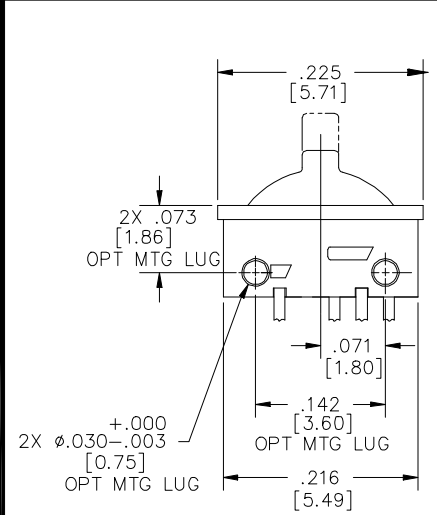
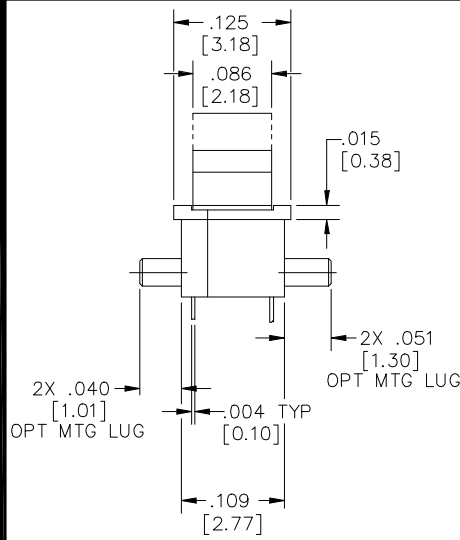
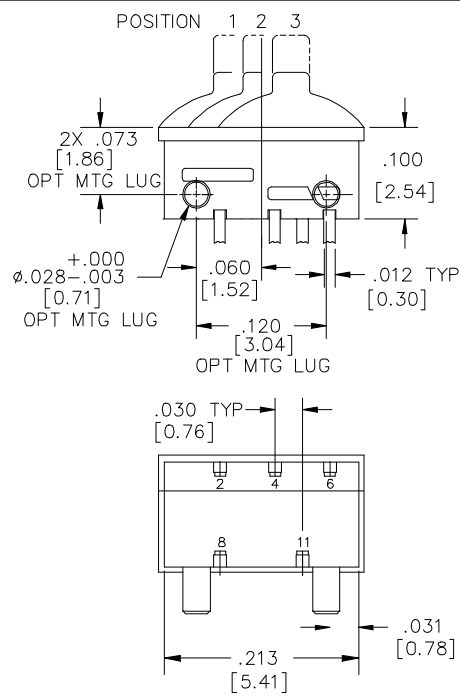
COVERS

LEFT

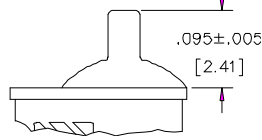
ASSEMBLED

RIGHT

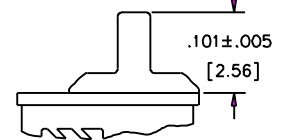
DRIVERS



STYLE A

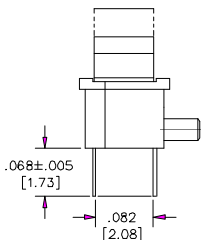


STYLE B

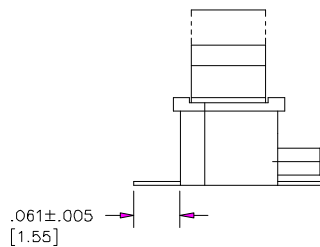


STYLE C

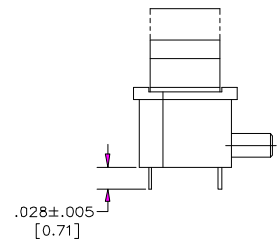
LEAD FRAME



STYLE A



STYLE B



STYLE D

MODEL 21-3 SCHEMATIC (BOTTOM VIEW)

