



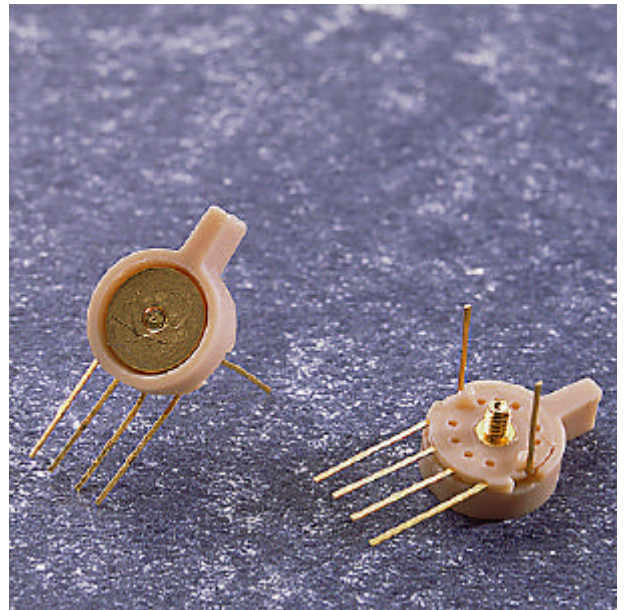
Resistance Technology, Inc.
 1260 Red Fox Road
 Saint Paul, MN 55112
 FAX (651) 636-9503
 1 (800) 966-3280
 Phone: (651) 604-9600
 Internet: www.RTI-Corp.com

In Europe:
 Resistance Technology GmbH
 Kesselschmiedstrasse 10
 D-85354 Freising, Germany
 Telefon: 049-8161-4804-0
 Telefax: 049-8161-4804-18
 Service@RTGMBH.de

PRODUCT DATA SHEET

PADDLE SWITCH MODEL 30

The Resistance Technology Model 30 3-position, 2-pole paddle switch was developed for use in behind-the-ear (BTE) hearing aids to enable switching between the microphone and telephone. The switch has 3 positions shorting, plus a separate on/off for either the right or left ear.



NOTES: 1. All dimensions are in standard inches; metric in []
 2. Unless specified dimensions are $\pm .003$ [0.08], angles $\pm 5^\circ$

PRODUCT SPECIFICATIONS

MECHANICAL DATA

Detent Torque 0.40 to 0.85 N-cm (.56 - 1.18 IN OZ)
 Deflection $10^\circ - 15^\circ$ typical before continuity changes
 Tactile sensation assures 3 stable positions 30° apart
 Soldering:
 Temperature $260^\circ - 350^\circ$ C
 Dwell Time 2 sec max
 Stop Torque >7.6 N-cm (10.5 IN OZ)
 Bending of Terminals 3 cycles min. per QM013
 Center Stud Nut Torque..... 3.5 In. Oz. Max.

MATERIALS DATA

Terminals/Leads Gold-Plated Beryllium Copper
 Rotary Contacts Gold-Plated Beryllium Copper
 Center Stud Gold-Plated Brass
 Washer Gold-Plated Brass
 Housing/Knob Glass-reinforced Thermoplastic
 Mounting nut (optional) Nickel-Plated Brass
 Colors Per Customer Request

ELECTRICAL DATA

Contact Resistance 250 Milliohms max; 30 Milliohms typ
 Contact Bounce and Noise Less than 5 milliseconds
 Voltage Rating 6.0 Volts DC max
 Current Rating 500 milliamperes max
 Make-before-break between all switching positions on terminals 1, 2, 3, 4, and 5
 Insulation Resistance >5 Megohms

ENVIRONMENTAL DATA

Operational Temperature
 Range -25° C to $+55^\circ$ C
 Storage Temperature
 Range -40° C to $+60^\circ$ C

Overall resistance will remain within 10% of the initial value and all other Electrical and Mechanical Parameters remain within spec after:

Thermal Shock per IEC Publication 68-2-14 Test Na: "Rapid Change of Temperature with Prescribed Time of Transition". -25° C to $+55^\circ$ C.

48 Hours Exposure to QE008 "Perspiration" at 40° C.

IEC Publication 68-2-3 Test Ca: "Damp Heat Steady State."

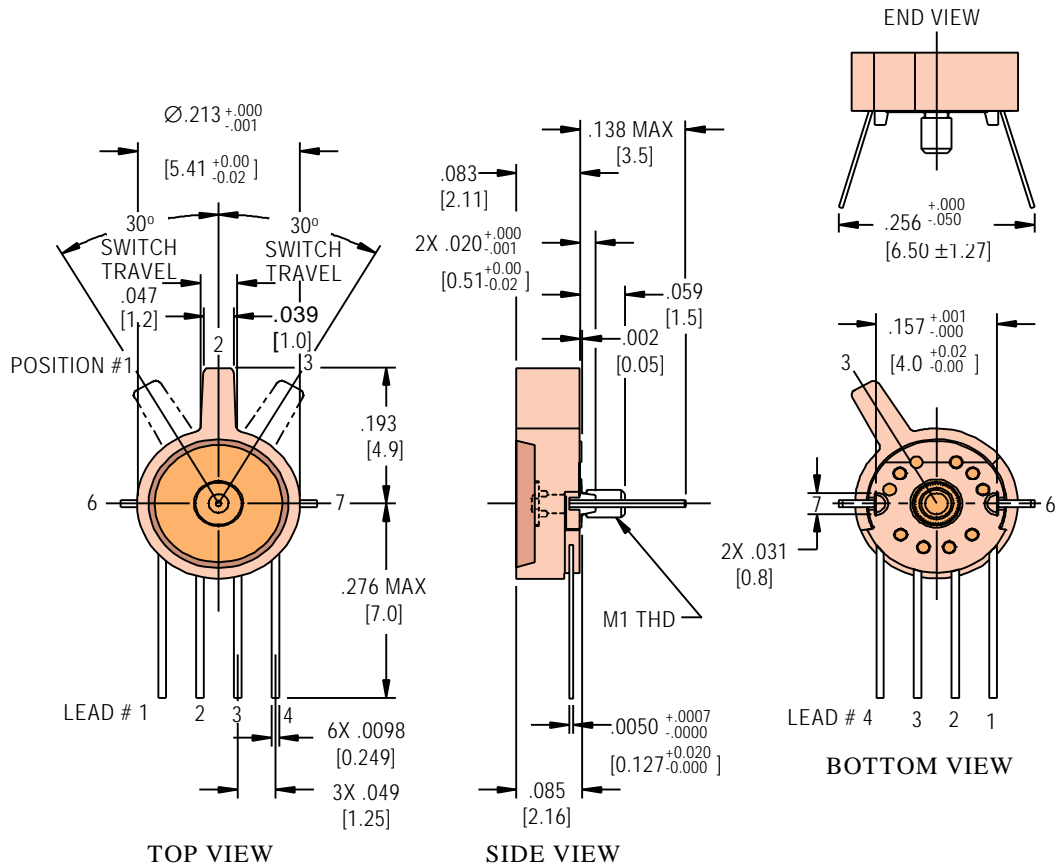
IEC Publication 68-2-30 Test Db: "Damp Heat Cyclic."

RTI reserves the right to make changes at any time to improve reliability, function, or design in order to provide the best possible product.



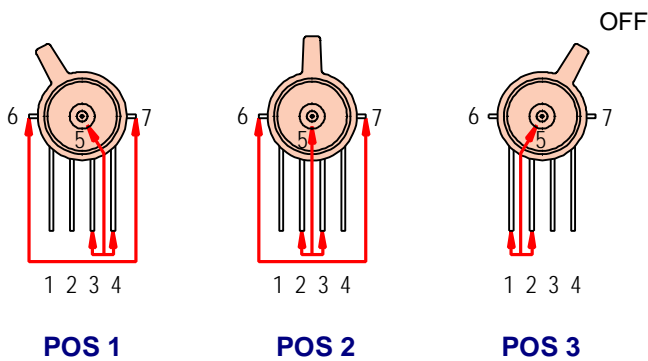
MODEL 30 PRODUCT DATA SHEET

MODEL 30AS AND MODEL 30BS PADDLE SWITCH

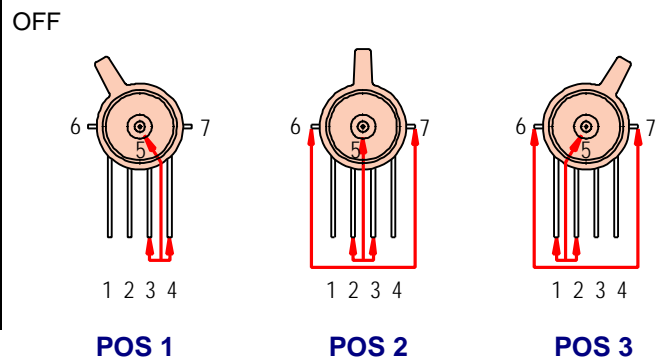


SCHEMATICS

M30AS



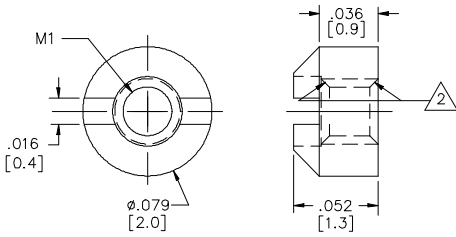
M30BS



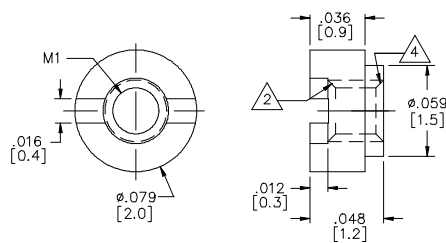


MODEL 30 PRODUCT DATA SHEET

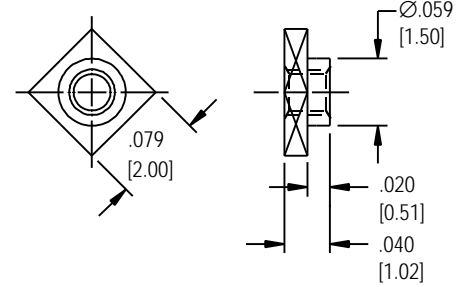
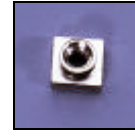
MOUNTING NUTS



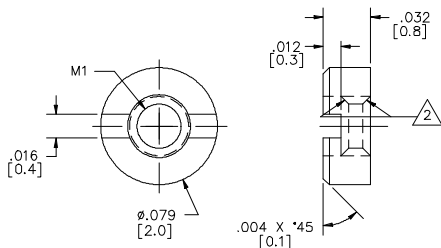
STYLE A



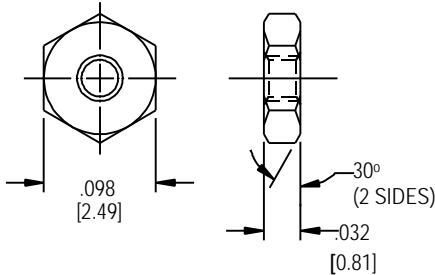
STYLE B



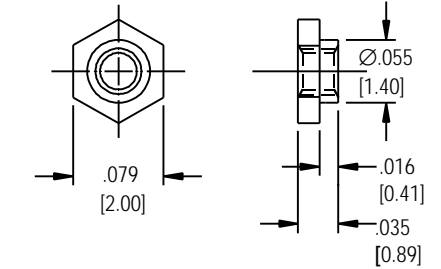
STYLE C



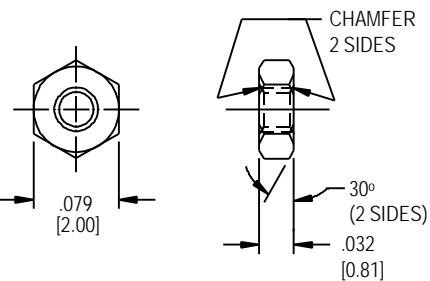
STYLE D



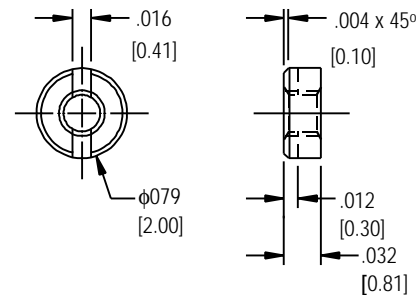
STYLE E



STYLE F



STYLE H



STYLE K